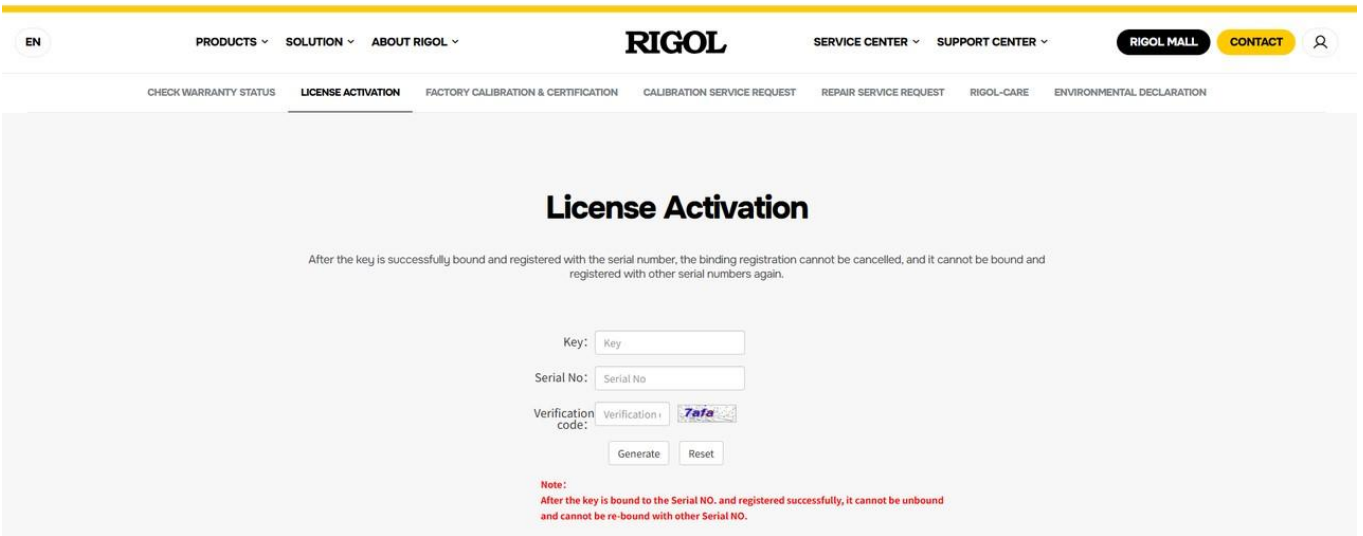


MHO98 Software Bundle Activation Guide


STEP1. Generate the Bundle authorization code

Log in to the RIGOL official website, fill in the 16-digit key and Serial Number , and register the software authorization code: [Click here](#)



Software License Key Registration

- How to obtain a 16-bit key

Scan the QR code on the [Embark on Your Journey of Discovery with MHO98!] card enclosed with the box, fill in and submit the information, and RIGOL will send the "Software License Certificate" to the email address you provided. Copy the 16-digit key on the certificate 



- **How to obtain the product Serial Number**

Serial Number, which is the machine serial number code, can be found by checking the SN code (ID) on the back of the machine.



SN code on the back of the machine

STEP2. Edit the Bundle activation command

```
:SYSTem:OPTion:INSTall MHO900-BND@[Your Bundle authorization code in Step1]
```

For example:

1. Generate an authorization code via STEP1:

```
A7DEC6C1E10D42EE8E3AF0728C3D272F507E646EB54B9C97E6CCBA98468A46
```

```
A863FED814C24D47B8B40C894B1822660B94852E6778392281A20B54B4E723E3FD
```

2. You can then edit the option activation command yourself:

```
:SYSTem:OPTion:INSTall MHO900-BND@A7DEC6C1E10D42EE8E3AF0728C3D272F507E646EB54B9C97E6CCBA98468A46
```

```
A863FED814C24D47B8B40C894B1822660B94852E6778392281A20B54B4E723E3FD
```

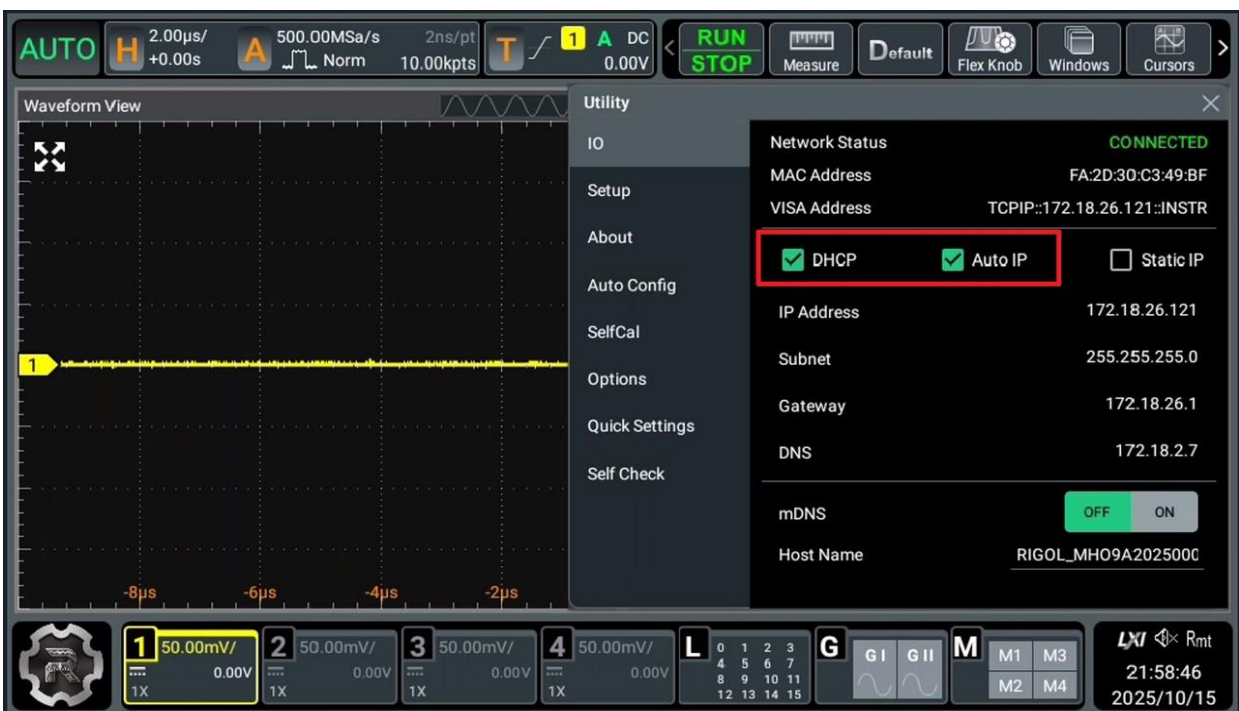
STEP3. Activate the Bundle

Activation Method 1: Activate via LAN network connection (recommended)

1. Connect the machine to the network: Connect the network cable to the network port on the back of the machine or use an external WIFI module;
2. Get IP Address: Click the **Start Menu** in the lower left corner- **Utility** - **IO**- Check **DHCP & Auto IP**, click **Apply**;



Start Menu



IP Address Settings

3. Open Webcontrol: Open any browser on your computer and enter the IP Address, e.g., 169.254.112.67

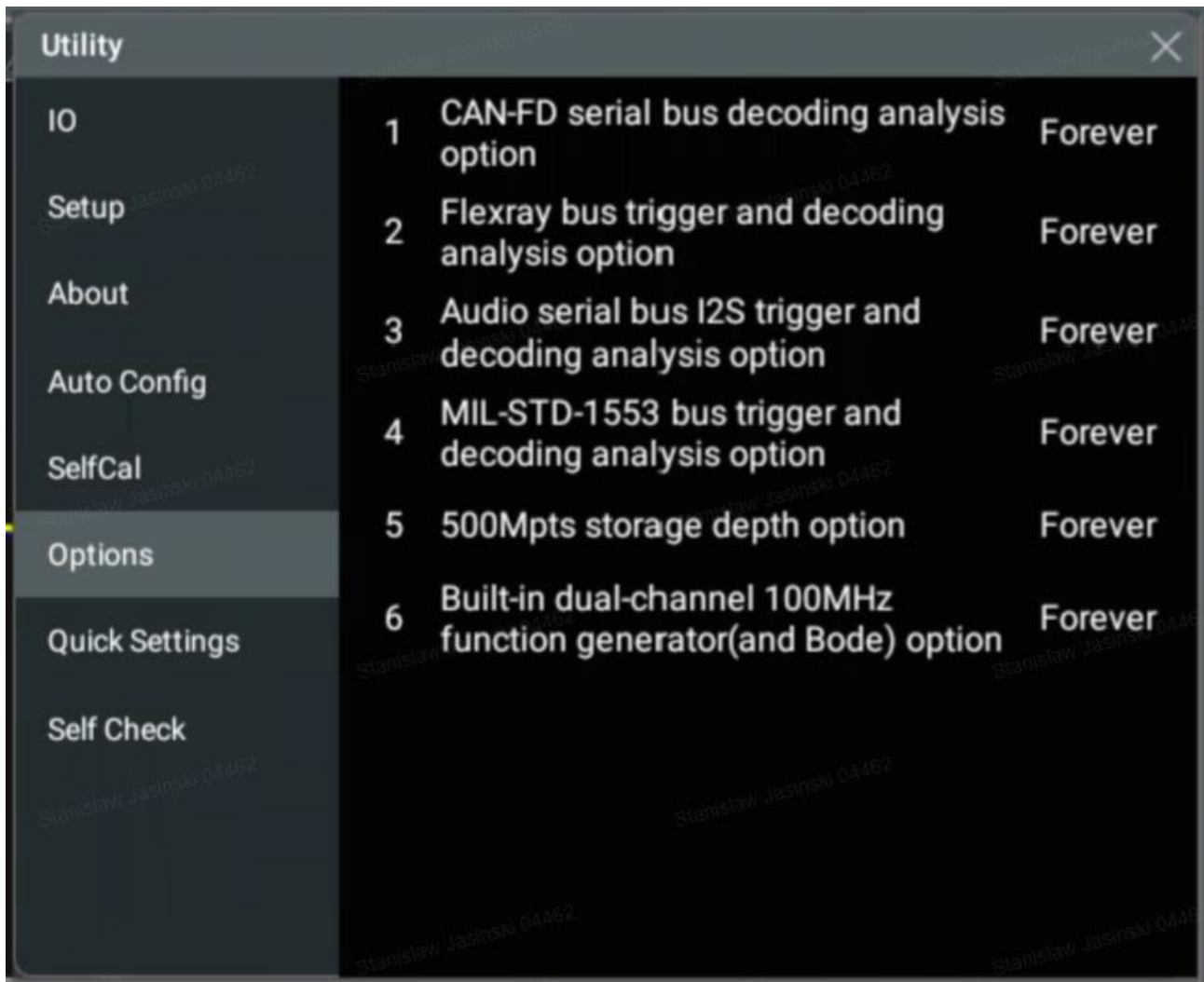
Please note that you need to ensure that the oscilloscope and the computer you are using are on the same network; otherwise, you may not be able to successfully access the Webcontrol interface of the oscilloscope

4. Send command: Click **SCPI Panel Control**, delete the original command, write the STEP2 command (:SYSTem:OPTion:INSTall MHO900-BND@[Your Bundle authorization code in Step1]) in the text box after **SCPI Command**, click **Send&Read** button, and the command writing is completed.



Send SCPI Command Interface

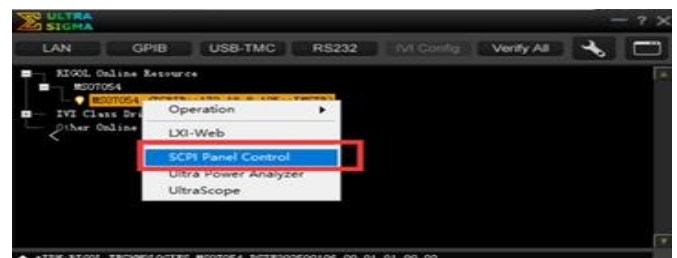
5. Check if the option is activated: Click the R logo in the lower left corner of the machine, select **Utility**, click **Options**, and check if the option status is displayed as **Forever**.



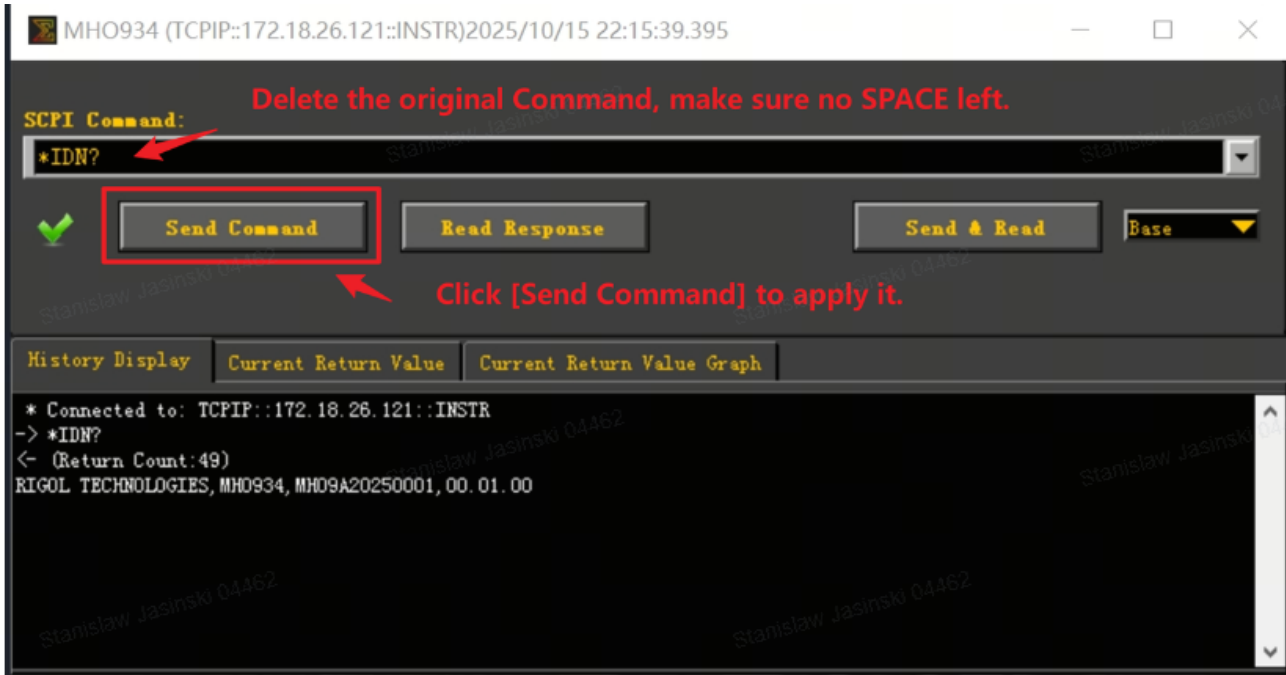
All Activated Software Options

Activation Method 2: Activate via USB communication

1. Log in to the RIGOL official website [Software and Firmware](#), download and install **Ultra Sigma** software;
2. Connect the oscilloscope and the computer using the standard **USB cable**, then open **Ultra Sigma** software;
3. As shown in the figure, when the machine serial number is displayed, the communication is completed. Right-click on the serial number- click **SCPI Panel Control**- enter the control interface;



4. Send the command for the installation Bundle obtained in Step 2 on the control interface, click **send**, and the installation will be completed.



If you need more detailed support, please contact RIGOL's official staff.